



PARCEL E/F TRANSPORTATION DEMAND MANAGEMENT PLAN

Minneapolis, MN

CLIENT:

Rottlund Company Inc. &
Sherman Associates, Inc.

REFERENCE:

Tim Himmer
Rottlund Homes
(651) 638-0591

SERVICES PROVIDED:

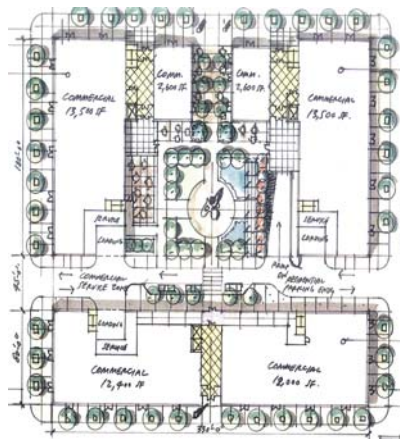
- Data Collection
- Existing Conditions Analysis
- Traffic Operations Analysis
- Parking Supply and Demand Analysis
- Strategic Management Plan

CONSTRUCTION COST:

NA

Project Description:

The Parcel E and Parcel F developments are owner-occupied residential developments with street level retail space. The projects are both located in the Mills Quarter of the Downtown East Neighborhood of Minneapolis. Combined, the projects will add over 50,000 square feet of street level retail, 25,000 square feet of restaurant space, and over 325 condominium units. The Transportation Demand Management Plan (TDM) inventoried the entire existing and future travel infrastructure associated with the site.



Roles and Responsibilities:

Alliant Engineering was responsible for preparing the TDM plan and submitting it to the city. Staff members documented the existing transportation facilities and operations at the project site, forecasted impacts associated with the project's development, and prepared a list of strategies to encourage non-single occupant vehicle modes of transportation. Special focus was placed on analyzing the off-street parking demands of the sites. The proximity of the projects to the new Guthrie Theater required a full inventory of parking facilities to determine the number of stalls available during events at the theater.

End Result:

The project is currently under construction and is scheduled for completion in the fall of 2007. The developers and property management teams agreed to an array of strategies that encourage a variety of travel modes. The projects' parking demand was shown to be met for all theater events, with the exception of theater events overlapping with Metrodome events.



INNOVATIVE • RESPONSIVE • PERSONAL