



SPRING CREEK

Carver, MN

CLIENT:
Centex Homes

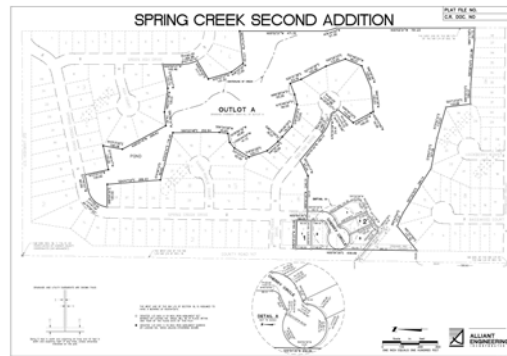
REFERENCE:
Ian Peterson, Centex Homes
Director of Land
Development

- SERVICES PROVIDED:**
- Existing Conditions Survey Depicting All Utilities, Topography and Boundary
 - Preliminary and Final Plat
 - Easements and Easement Descriptions
 - Construction Layout Including Mass Grading, Utilities, Curb and Gutter, Lot Certificates

CONSTRUCTION COST:
\$+ 4 million

Project Description:

The Spring Creek Development is a 76-acre residential single family project located in the City of Carver, Minnesota. Upon completion, this development will consist of 131 single family residential lots and associated detached housing, a trailhead and trail system, linear park area, regional storm water retention facility and partial restoration of Spring Creek, roadways and utilities. Preservation of onsite sensitive natural resources including bluff ravines and Spring Creek became a significant project opportunity as well.



Roles and Responsibilities:

Alliant Engineering prepared existing conditions survey by terrestrial methods merged and overlapped with aerial topography in the bluff preservation areas. This allowed for meeting an aggressive design and submittal schedule in our Land Development and provided accurate based information for the design areas. Our Survey Department teamed with the Land Development Department to bring this site through the fast paced approval process. We provided construction staking services through Summer and Fall of 2006 for infrastructure of pad sites and roads. We continue to provide staking services for building construction from permitting to certificate of occupancy.

End Result:



INNOVATIVE • RESPONSIVE • PERSONAL