

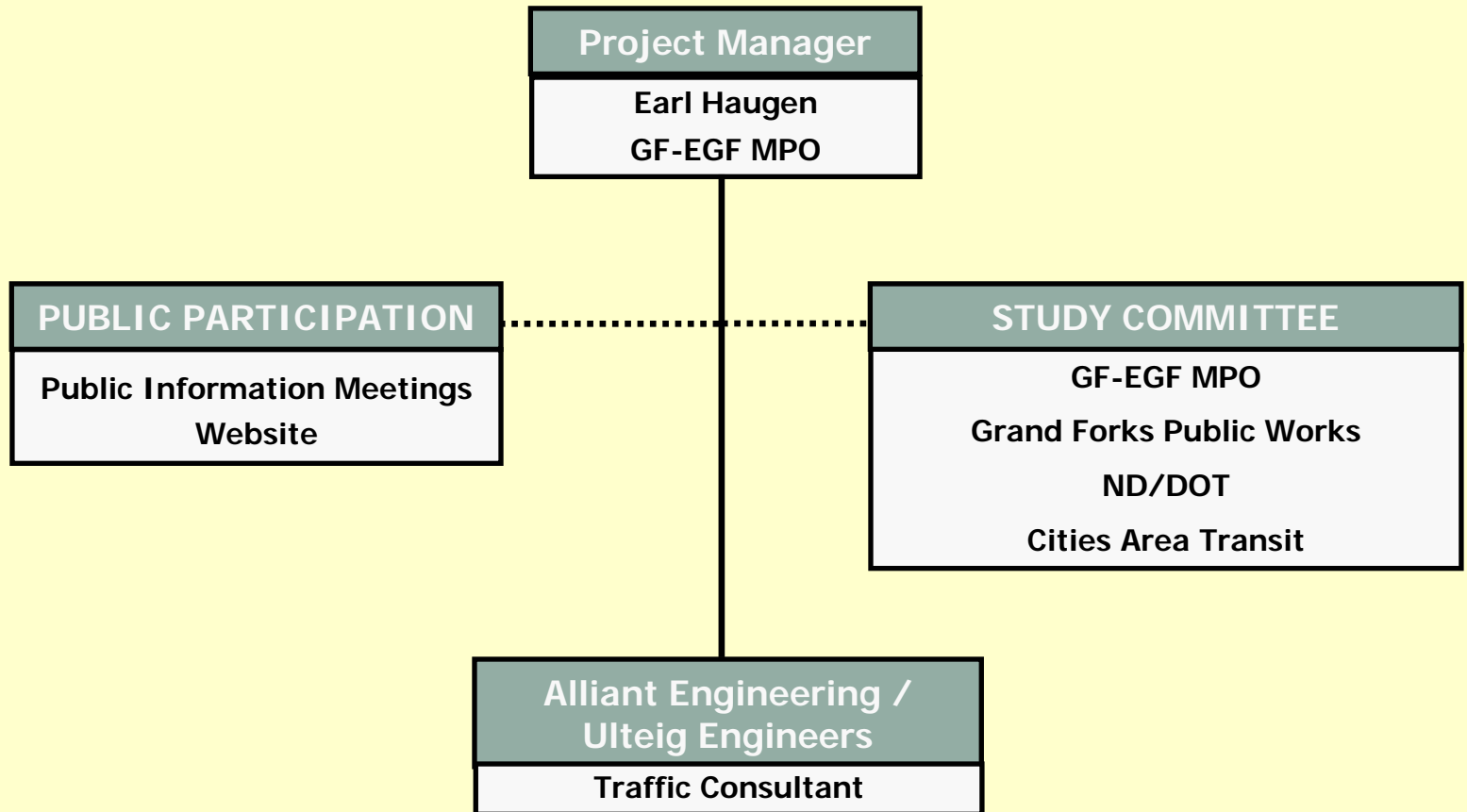
Public Open House
October 14, 2009

*Grand Forks
Signal Coordination Study*





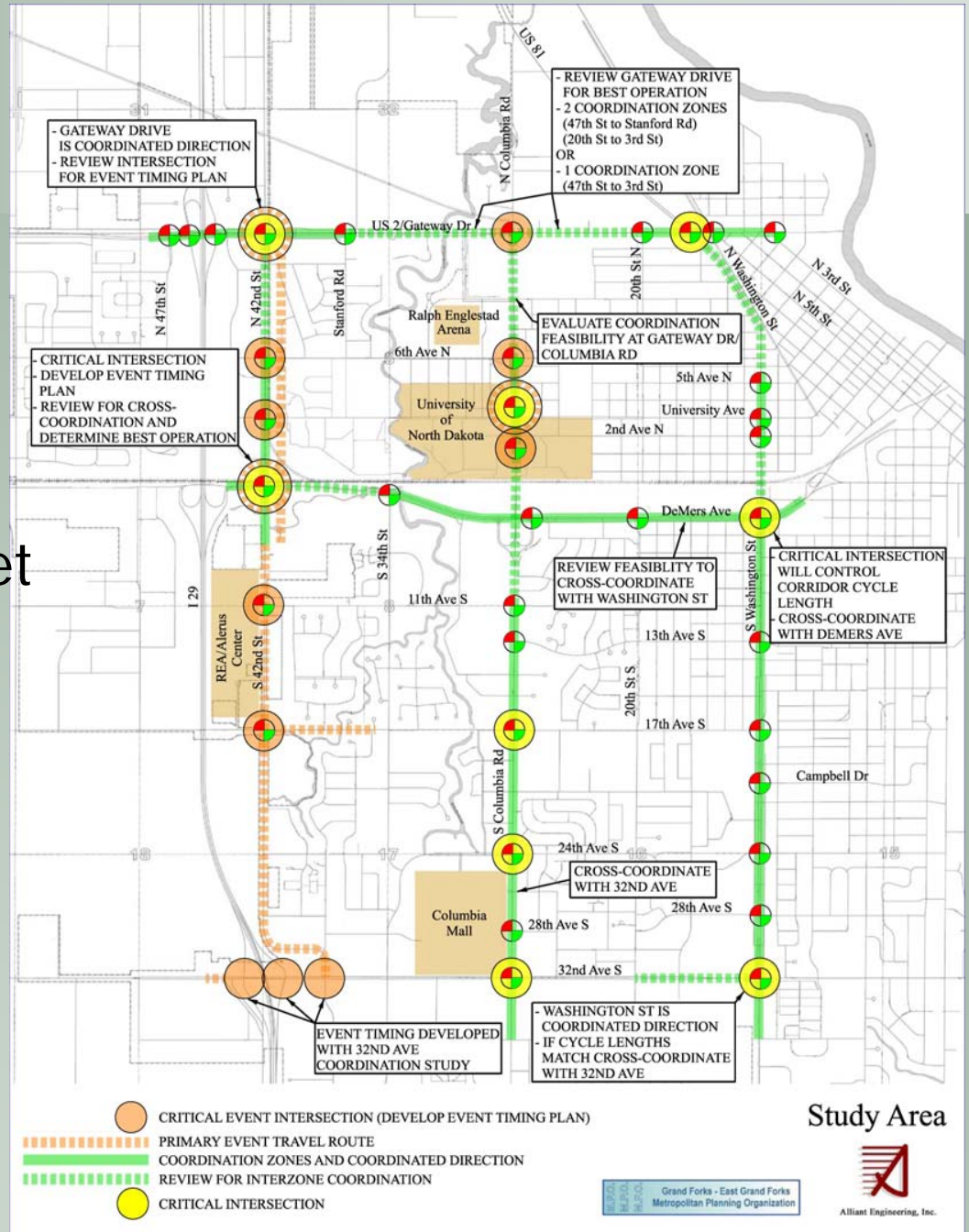
Project Team





Study Area

1. Columbia Road
2. Washington Street
3. Gateway Drive
4. DeMers Avenue
5. 42nd Street



Study Area

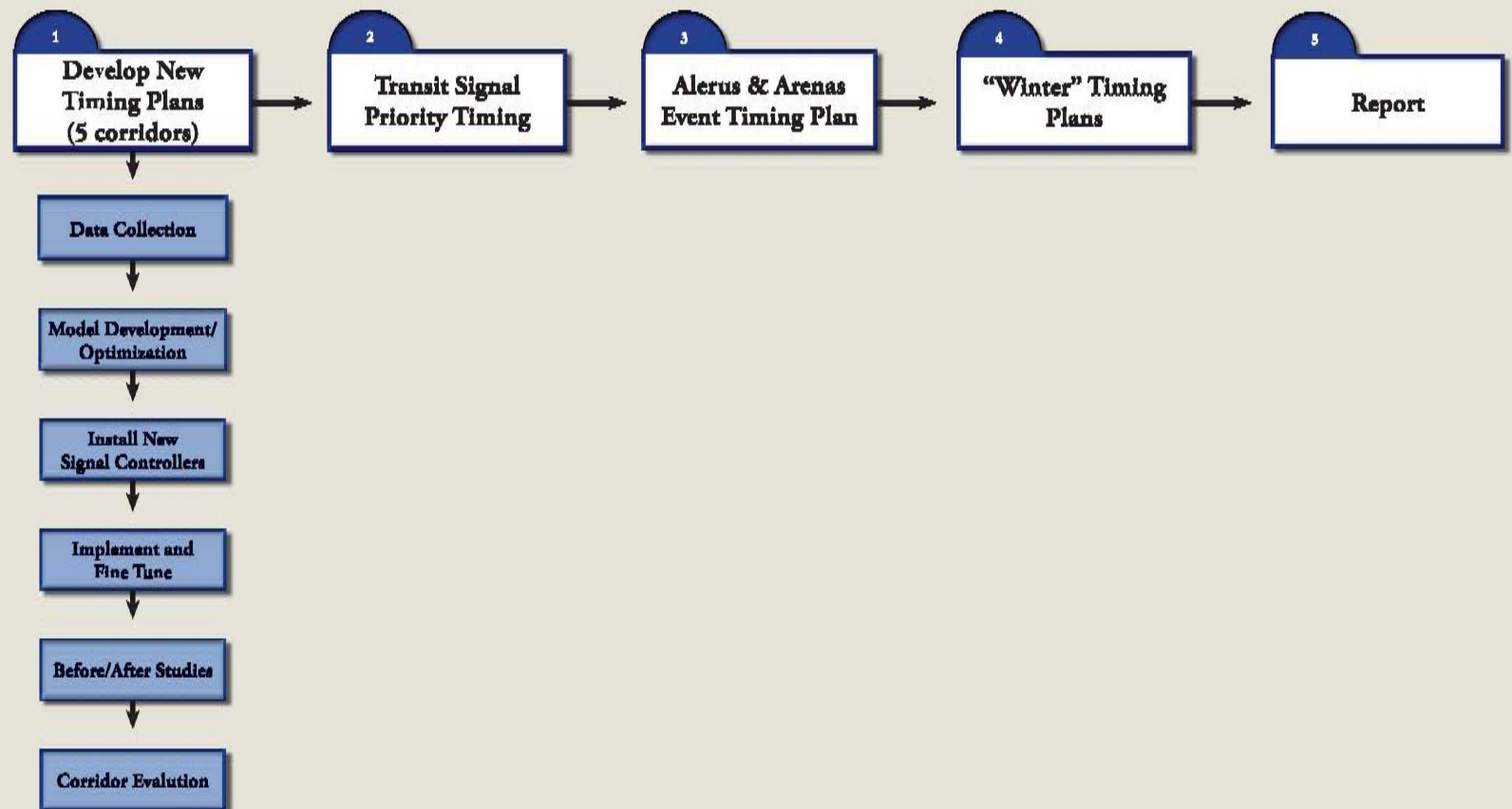


What is Signal Timing?

- Process to “Optimize” the operation of signalized intersections.
- **Objective:** Respond to the demands of all users of the intersection in a balanced manner.
- **Goal:** Provide improved traffic flow. Move the majority of traffic, with as few stops as possible, and reduced travel times.
- **Result:** Reduce motorist delays, fuel consumption, vehicle stops and improve safety.
- **Benefits:** (e.g., 32nd Avenue)
 - 1.3 million user cost savings, 31:1 B/C
 - 25% reduction in stops, 9% reduction in fuel (600 gal daily), 6% reduction in delays
 - Travel times improved 23% in AM and 29% in PM



Study Process / Work Program





Tentative Project Schedule

Key Milestone Dates

- Data Collection: Sept. 2009 – Dec. 2010
- New Timing Plans
 - Columbia Road: Oct. 15-17, 2009**
 - Washington Street: May 2010
 - DeMers Avenue: Fall 2010
 - Gateway Drive: Fall 2010
 - 42nd Street: Fall 2010
- Bus Priority Timing: Fall 2010
- Event Timing Plans: Fall 2010
- “Winter” Timing: Dec. 2010
- Project Report: Dec. 31, 2010



Project Activities This Week

- Oct. 15-17 (Thursday-Saturday): Implementing and fine-tuning interim timing plans on Columbia Road
- Oct. 16 (Friday): Observing REA event traffic
- Oct. 17 (Saturday): Observing Alerus Center event traffic



What to Expect

- Majority rules
- Lower volume movements might experience a slightly longer wait.
- Lagging left turn arrow at Columbia/32nd Avenue. (Green arrow comes up at the end of the adjacent thru lane green ball).
- No cross-street left turn arrow at 28th Avenue and University Avenue (mid-morning and late evening).
- Planned stops to group vehicles
- Heavier volume direction is favored.



Project Contact

- Earl Haugen
GF-EGF MPO
701-746-2660
- Project Website
<http://www.theforksmpo.org/Pages/Projects.htm>



Signal Coordination Study Open House

- Please take a handout
- Please sign-in
- Please lend your insight and fill out a comment form
- Boards are located throughout room
- Traffic model display
- Test your skills game
- Ask questions...we're here until 7 p.m.



Questions?